

SEATTLE HOMES

LIFESTYLES™ Design and Architecture for Northwest Living

DESIGN CRAVE

Fresh ideas for spring!

April 2010

\$3.95 US

04>



1486-03345-5
eHomesMag.com



TAILOR-MADE

A RECURRING COLLABORATION BETWEEN DESIGNER AND
CLIENTS LEADS TO A SOPHISTICATED, ECLECTIC LOOK

WRITTEN BY LISA KENNEDY
PHOTOGRAPHS BY DAVID PAPAZIAN

THE LIBRARY FEATURES A TABLE MADE FROM AN ANTIQUE CHINESE DOOR, CONTEMPORARY CHAIRS FROM HOLLY HUNT AND AN ANTIQUE FRENCH EMPIRE CHAIR. THE ROOM-SIZED SISAL RUG IS OVERLAID WITH AN USHAK RUG FROM TURKEY. THE OIL PAINTING OF NAPOLEON BONAPARTE IS BY TONY SHERMAN.





above: A ROUND PORTUGUESE-STYLE PEDESTAL TABLE MAKES FOR CASUAL GATHERINGS IN THE NEW FAMILY DINING ROOM. A SHIPPING BOX IN WHICH JAPANESE SCREENS WERE DELIVERED IS REINCARNATED AS A CONSOLE. THE CHAIRS ARE FROM MICHAEL FOLKS; THE DROP PENDANTS ARE BY GULASSA & CO., INC.

opposite: AN ANDY WARHOL SILKSCREEN OF EINSTEIN AND AN ANTIQUE ENGLISH CLOCK ARE SET OFF BY DARK OLIVE WALLS. THE BENCH, MUCH BELOVED BY THE FAMILY DOG, IS COVERED IN COWHIDE.

Interior designer Doug Rasar often works on multiple projects with the same clients over the years. Not long ago, Rasar and architect Brandt Hollinger (who has since retired and moved to California) revisited a home on Yarrow Point that they had designed more than 10 years ago for a Bellevue family. The couple's then-young children had since grown into high school students, and the family was ready for a new look as well as a remodel to meet their changing needs.

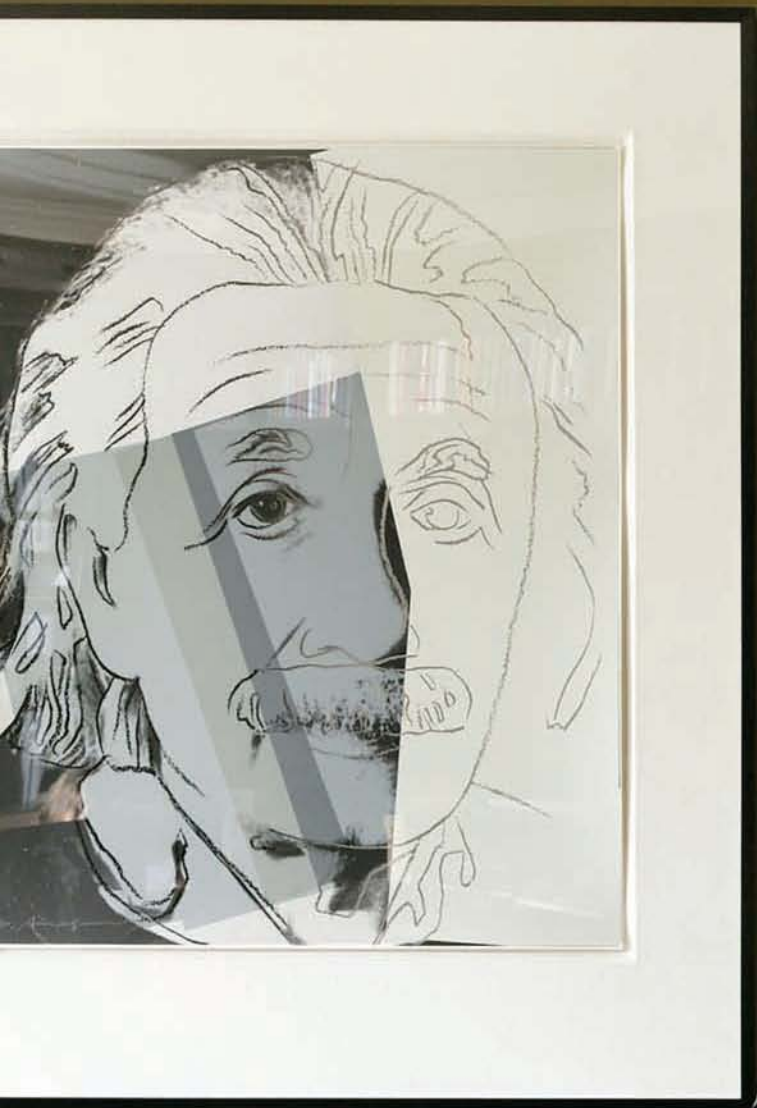
Since their first collaboration, Rasar had worked on the owners' Montana ranch and their business office interiors. The designer welcomed the opportunity for another "joint venture." "We always have a lot of back and forth," Rasar says of the relationship with his clients, who were involved in all aspects of the redesign.

In its original conception, the shingle-style home kept to traditional décor and primary colors. This time around, the idea was to introduce a more

mutated and sophisticated color sensibility and to infuse the interiors with both eclectic and modern touches. "The whole agenda was to make this a more mature family house," says Rasar, who used dark, rich earth tones for the finishes and furnishings.

The first priority was to enhance the home as a gathering spot for the teenage twins and their friends. Rasar and Hollinger enlarged the kitchen and moved it to an outside wall so the owners can enjoy natural light in that room. They created an informal dining space in the former kitchen area and converted what was once the main living room into an inviting library. Other additions include a media and game room and a covered outdoor patio with a fireplace that serves as an all-weather entertainment area. Upstairs, they reconfigured the children's rooms and the closets.

A collection of exquisite contemporary American artwork—which the owners had originally acquired for a corporate office—found new life in





clockwise from upper left: THE ANTIQUE FRENCH EMPIRE CHAIR IN THE LIBRARY FEATURES EXQUISITE DETAILS; A TANSU FROM JAPAN, LEADED GLASS CABINETS WITH PAINTED WHITE TRIM, A TWO-TONED WOOD ISLAND AND HEXAGONAL TERRA-COTTA TILES FROM EUROPE HAPPILY COEXIST IN THE NEW KITCHEN. RASAR AND GULASSA & CO., INC., DESIGNED THE STEEL-AND-LINEN LIGHT FIXTURE. THE DONGHIA COUNTER STOOLS ARE COVERED IN MAN-MADE LEATHER FOR EASY MAINTENANCE; THE BLACKENED-STEEL SCONCES ARE MOUNTED ON MATTE-FINISH TILES FROM ANN SACKS USED LIKE PAINT TO COVER THE KITCHEN WALLS.

the redesigned home. Many of the pieces are now focal points that are given added relief by deep hues on the walls. Rasar, who believes in creating a highly individualized look for each project, shopped in New York and Los Angeles as well as Seattle to outfit the new interiors, as well as creating many custom light fixtures with Gulassa & Co., Inc.

The home is now a harmonious mix of both old and new European, Asian and American furnishings. As in all Rasar interiors, the home contains many unique features. In the media room, for example, Rasar juxtaposed stained and painted wood on the walls. He also seamed together small area rugs to form a larger floor rug and designed a custom sectional with a back upholstered in woven tribal rugs.

The marriage of diverse elements is perhaps most surprising in the kitchen. Here, a two-toned wood island is topped by honed granite bordered by a leather-finish granite; tiled walls, leaded glass cabinets, an antique Japanese

tansu and old European hexagonal flooring tiles all magically come together into a warm, coherent whole.

Throughout the project, durability was a strict requirement—everything needed to be able to withstand heavy use by the active household. Seating in the dining room and kitchen was upholstered in Izit man-made leather, and the outdoor patio chairs are resin for ease of maintenance. “This family has a huge zest for life and really lives large,” Rasar says.

With its personalized touches, updated and enlarged kitchen, and re-configured bedrooms—plus the new library, media room and outdoor entertaining space—this home now has everything the family needs to live as large they want. ■

Design writer and interior designer Lisa Kennedy recently moved into a new home in the Madison Valley.

For resource information, see Sources, page 78.



clockwise from top:
THE COOL DRAMA OF THE FIREPLACE IS WARMED BY THE EARTHY TONES OF THE NATURAL WOOD SHUTTERS AND THE KNOTTY PINE WALLS AND CEILING. THE PAINTING IS BY JOE ANDOE; AN ANTIQUE INDUSTRIAL ARMOIRE PURCHASED IN NEW YORK HIDES MEDIA EQUIPMENT; THE COVERED OUTDOOR PATIO OUTLINED BY A CIRCULAR COLONNADE IS BUILT AROUND A MASSIVE FIREPLACE AND LENDS ITSELF TO ALL-SEASON ENTERTAINING. THE WICKER RESIN CHAIRS AND TABLES CAN WITHSTAND THE ELEMENTS AS WELL AS TOUGH USE. THE LIGHT FIXTURE IS BY PAUL FERRANTE INC., IN LOS ANGELES.